

Features

- 316 Stainless steel housing, shaft, and handwheel
- Expanded temperature range 5° to 320°F (-15° to 160°C)
- Aluminum Bronze gear drive
- Viton (FPM) Seals
- Easy ISO5211 mounting
- IP65 weatherproof enclosure
- Adjustable travel stops are standard and factory set
- 304SS bolts and nuts
- Superior corrosion resistance
- Stainless steel valve position indicator

**Applications**

Manual valve operation for applications requiring higher temperatures and/or superior corrosion resistance.

Operations

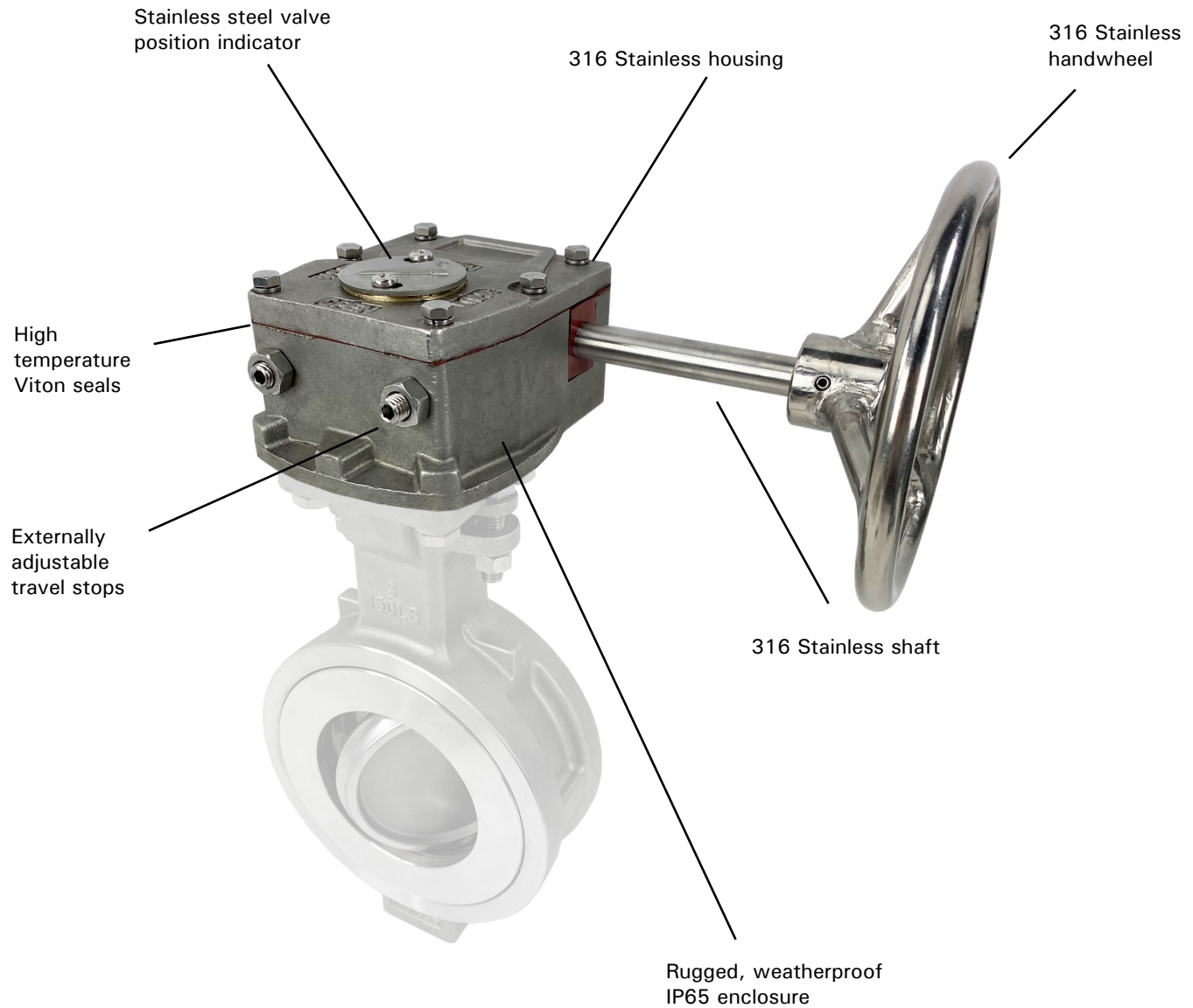
Rotating the handwheel turns an internal gear box which cycles the valve. Travel stops are factory set but can be adjusted externally (i.e. without disassembly).

Description

High performance handwheel gear operators enable manual operation for applications with expanded temperature requirements. Stainless construction also provides superior corrosion resistance compared to cast iron or grey iron gear operators.

Temperature Range

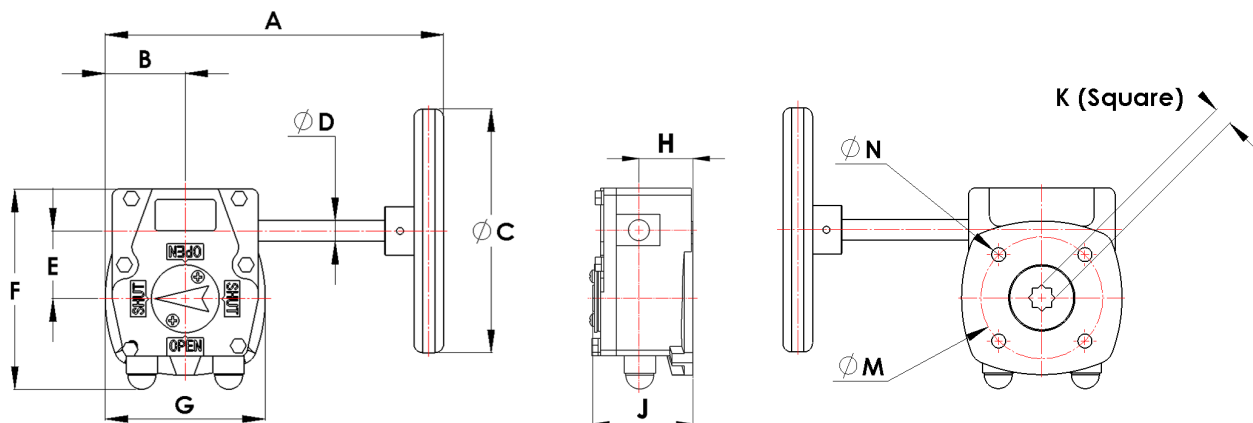
5° to 320°F (-15° to 160°C)

Features

Features

Specifications

Stock No.	Output Drive	Input Torque (nm/in. lbs)	Output Torque (nm/ in. lbs)	Ratio	Description
565930	F07	19/168	200/1770	40:1	Aluminum bronze gear drive; 316SS housing, shaft & handwheel; expanded temperature range and superior corrosion resistance
565931	F10	45/398	500/4425	42:1	Aluminum bronze gear drive; 316SS housing, shaft & handwheel; expanded temperature range and superior corrosion resistance
565932	F10	45/398	500/4425	42:1	Aluminum bronze gear drive; 316SS housing, shaft & handwheel; expanded temperature range and superior corrosion resistance



Stock Number		A	B	C	D	E	F	G	H	J	K	M	N	ISO	Weight
565930	inch	5.9	1.8	5.5	0.5	1.5	4.4	3.6	1.2	2.2	0.4	2.8	-	F07	6.8 lb
	mm	151.0	46.0	140.0	12.0	39.0	111.0	92.0	31.0	55.0	11.0	70.0	M8x15		3.1 kg
565931	inch	8.3	2.3	10.2	0.6	2.1	5.7	4.6	1.4	2.4	0.6	4.0	-	F10	14.2 lb
	mm	212.0	59.0	260.0	15.0	53.0	145.0	118.0	35.0	61.0	14.0	102.0	M10x18		6.4 kg
565932	inch	8.3	2.3	10.2	0.6	2.1	5.7	4.6	1.4	2.4	0.7	4.0	-	F10	14.2 lb
	mm	212.0	59.0	260.0	15.0	53.0	145.0	118.0	35.0	61.0	17.0	102.0	M10x18		6.4 kg