

### Features

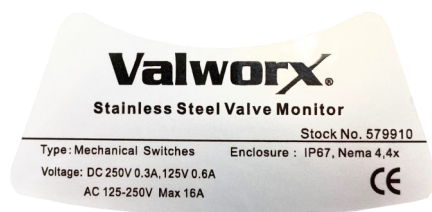
- Multi-view visual valve position indicator
- Dual limit switches for remote valve position confirmation
- Standard Namur VDI/VDE-3845 mounting
- Weatherproof Type 4, 4X, 7, 8, and IP67 construction
- 316 Stainless steel housing
- Universal mounting bracket included
- Corrosion resistant

### Applications

Valve monitors (limit switch boxes) are rotary position devices used for both local and remote indication of valve position. Indicators are typically mounted to the top of standard pneumatic rotary actuators via the standard Namur VDI/VDE-3845 mounting pad.

### Operation

Output shaft from the air actuator rotates 90° turning the input shaft of the monitor and moving the visual indicator from closed to open (reverses to close). In addition, limit switches provide a dry contact output signal in both the open and closed position. This signal is used to remotely confirm the valve position.



### Construction

Enclosure	316 Stainless Steel
Indicator Cover	Polycarbonate
Output Shaft	304 Stainless Steel (Namur)
Fasteners (enclosure)	304 Stainless Steel
Seals	NBR
Adjustable Cams	Polycarbonate
Mounting Bracket/Fasteners	304 Stainless Steel



### Description

Valworx stainless steel valve indicator is a rotary position device used to confirm the valve position when mounted to a pneumatic actuator. The visual indicator on top of the device can clearly display the valve position for local detection. Mechanical limit switches provide an electrical signal output to PLC's or other devices to confirm both the open and closed valve position.

### Specifications

**Enclosure Rating:** Weatherproof Type 4, 4X, 7, 8, and IP67

**Operating Temperature:** -4 to 122° F (-20 to 50° C)

**Visual Indicator:** Open-Closed multi-angle top and side view (yellow/red)

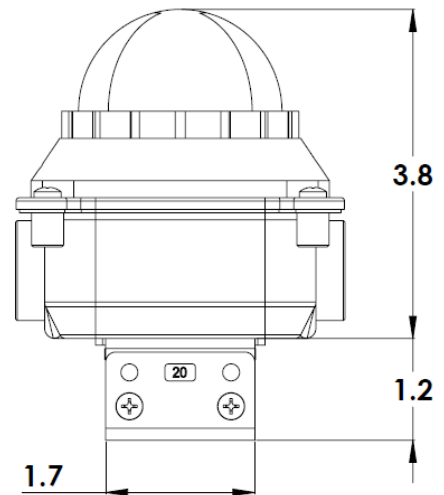
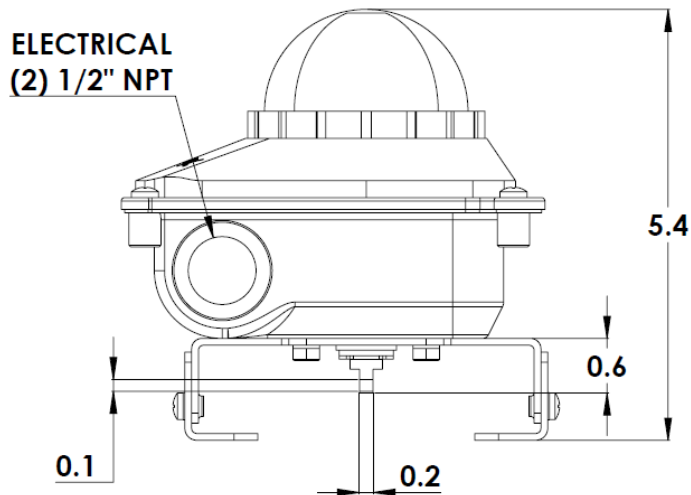
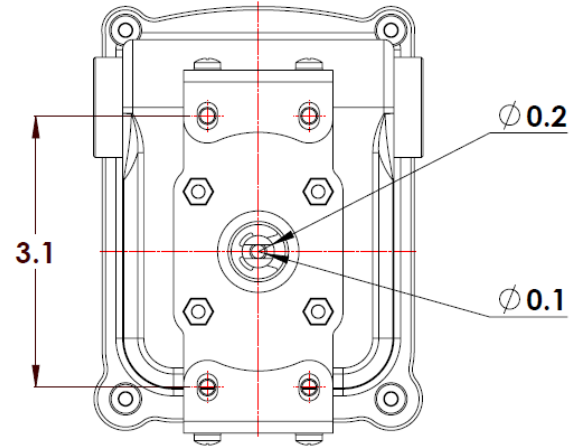
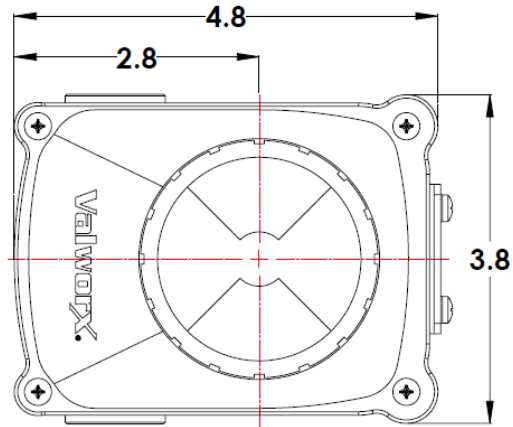
**Limit Switches:** (2) SPDT mechanical 250VDC 0.3A, 125 VDC 0.6A, 125-250VAC Max 16A, UL rated

**Electrical Connection:** (2) 1/2" female conduit (NPT)

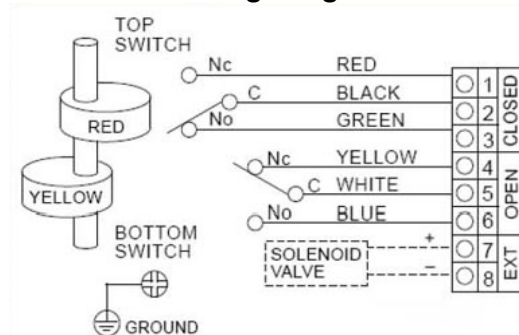
**Terminal Strip:** (8) Rugged screw terminals

**Mounting Bracket:** Fits Namur 30x80mm and 30x130mm mounting pad

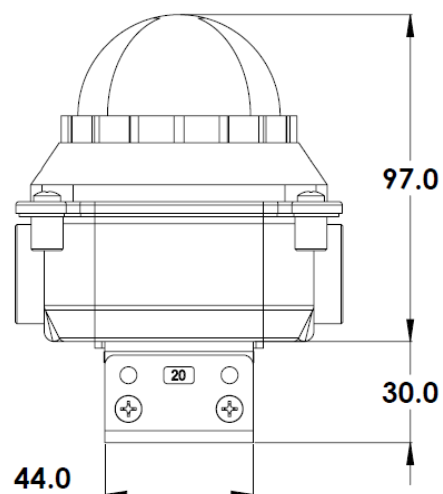
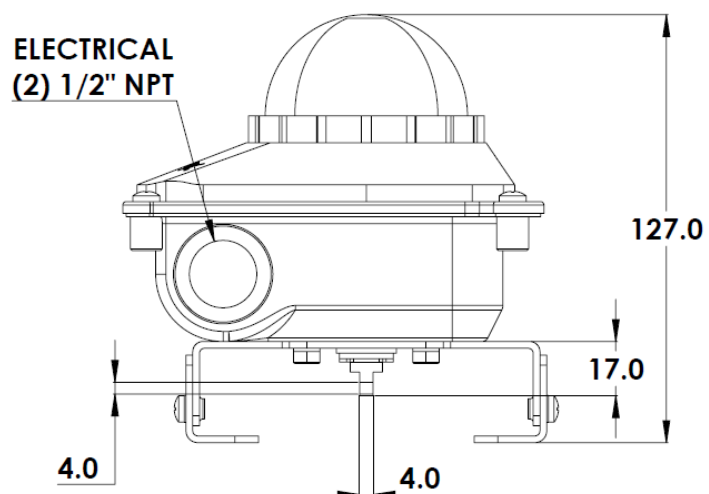
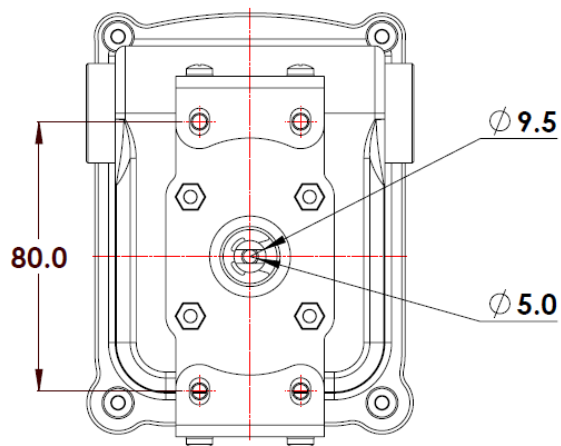
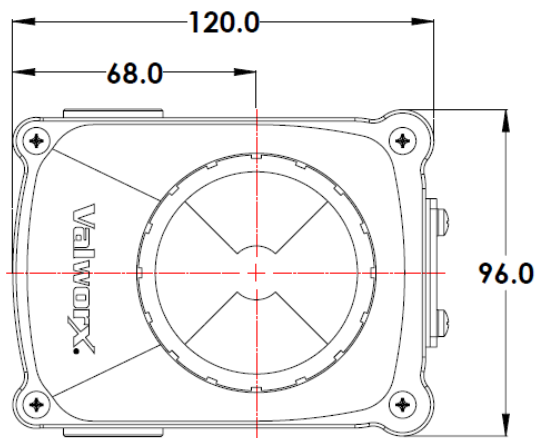
Dimensions: 30X80X20(inches)



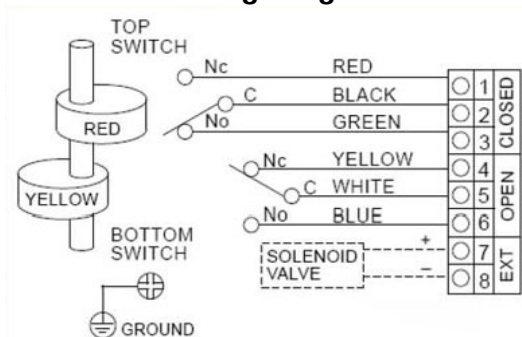
## Wiring Diagram



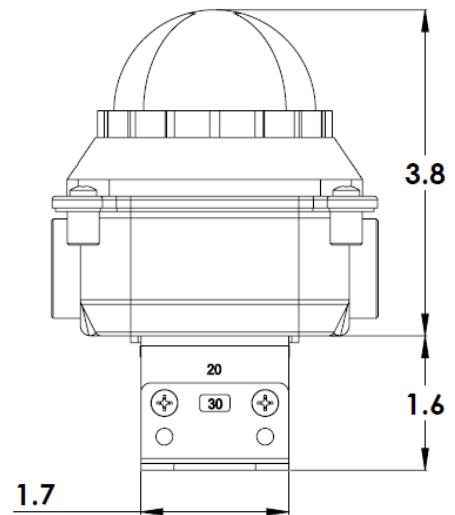
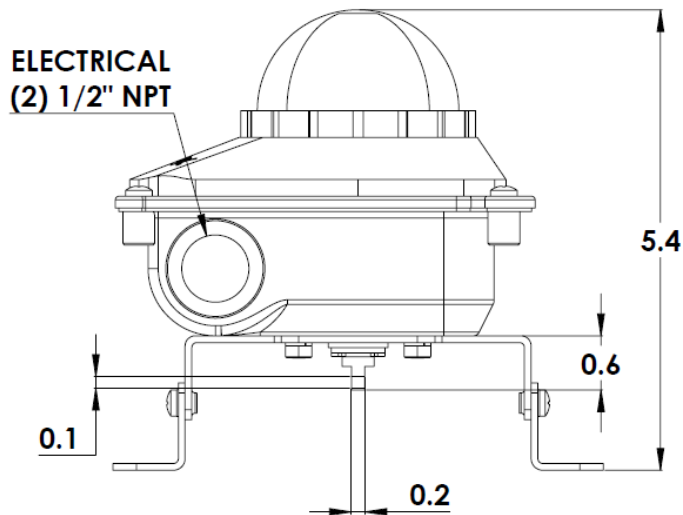
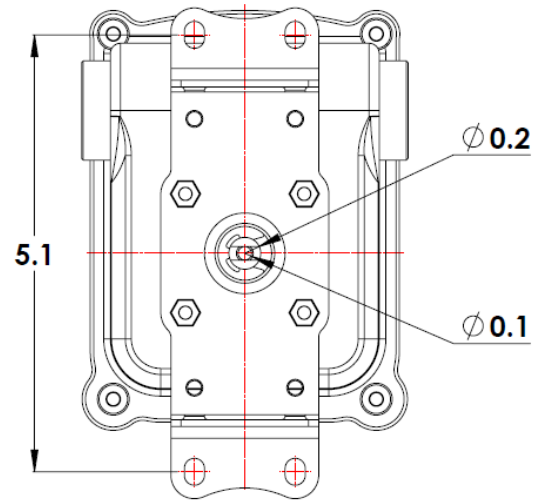
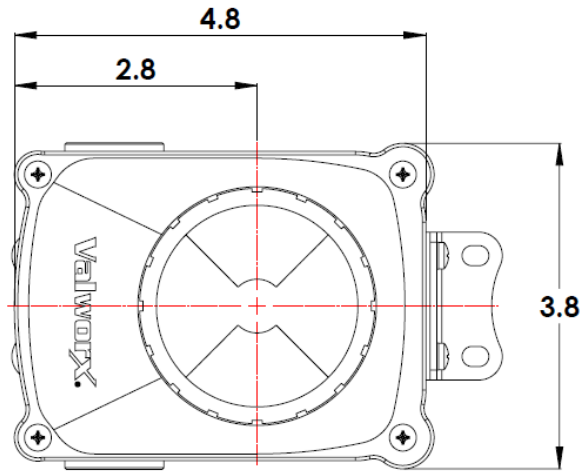
Dimensions: 30X80X20(mm)



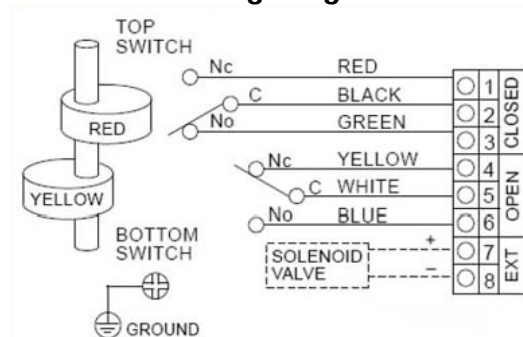
## Wiring Diagram



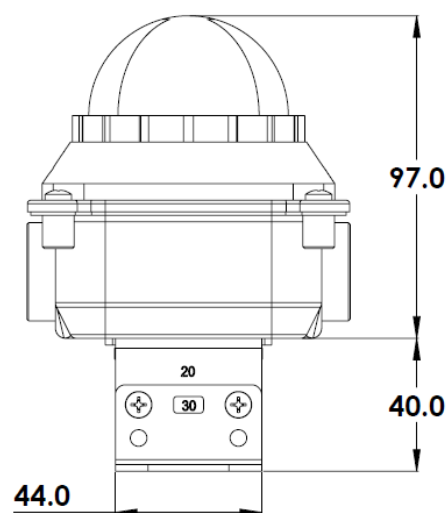
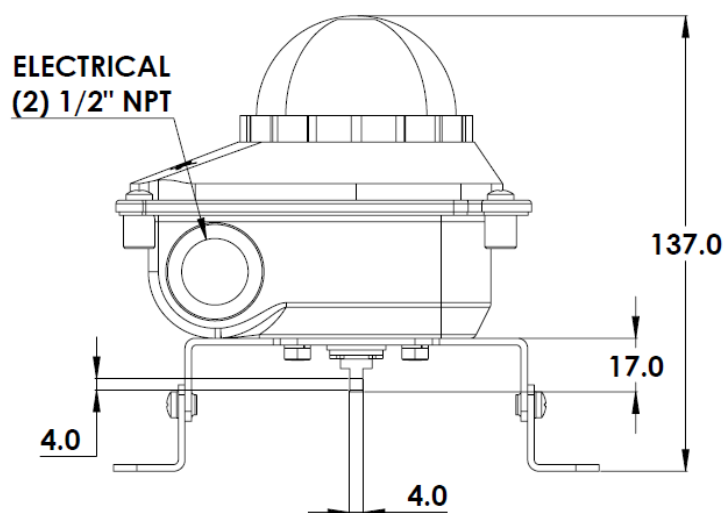
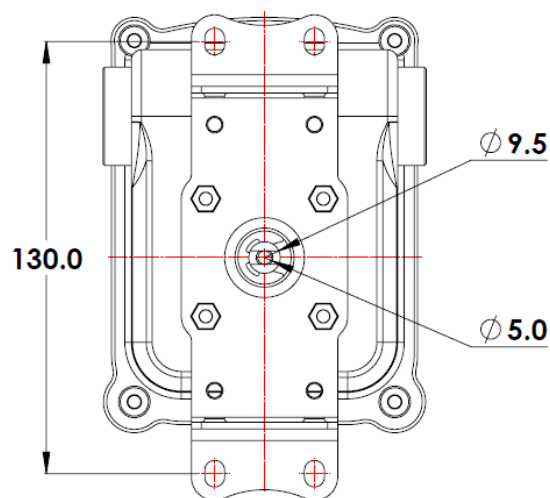
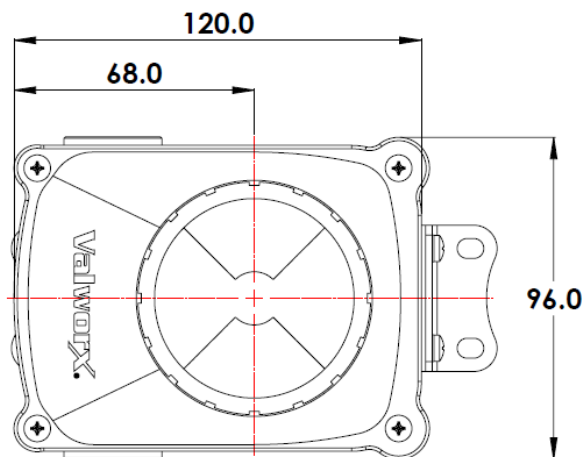
Dimensions: 30X130X30(inches)



## Wiring Diagram



Dimensions: 30X130X30(mm)



## Wiring Diagram

